

9.6 CRH Extended rotary handle

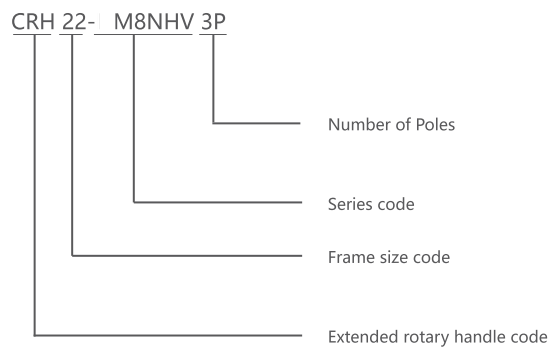
9.6.1 Function



Using a unique design driving structure, by rotating the handle to achieve the circuit breaker closing, switch and re-close operation.

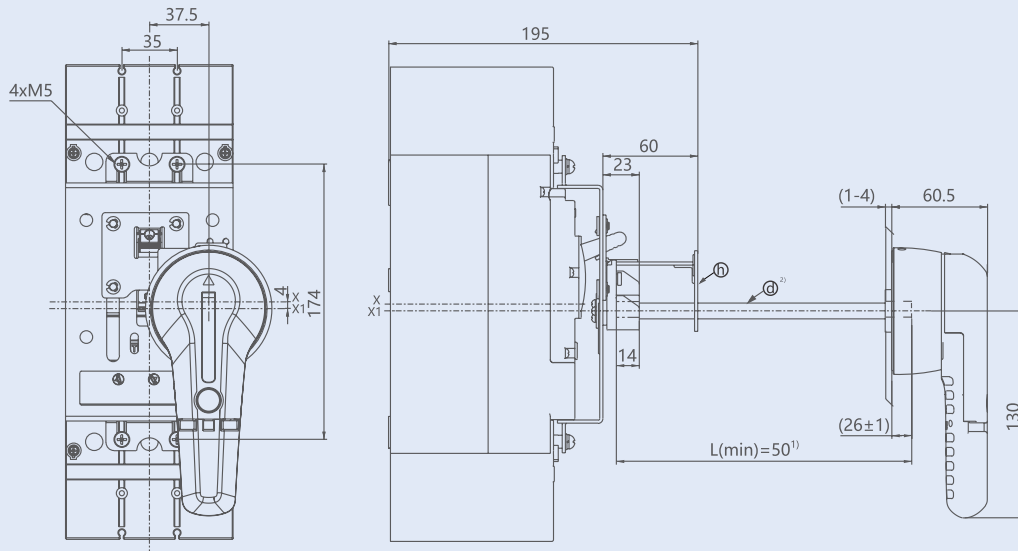
- Three position indication includes O (open), I (closed) and free tripping;
- The circuit breaker can hang 1 to 3 padlocks at OFF position, with a diameter of 5 to 8 mm, thus, in order to prevent the circuit breaker to close and switch gear to open;
- When the circuit breaker is at ON position, cabinet door cannot open under the action of the rotating handle (cabinet door can be opened by the emergency unlocking device on the handle in emergency situation).

9.6.2 Model description



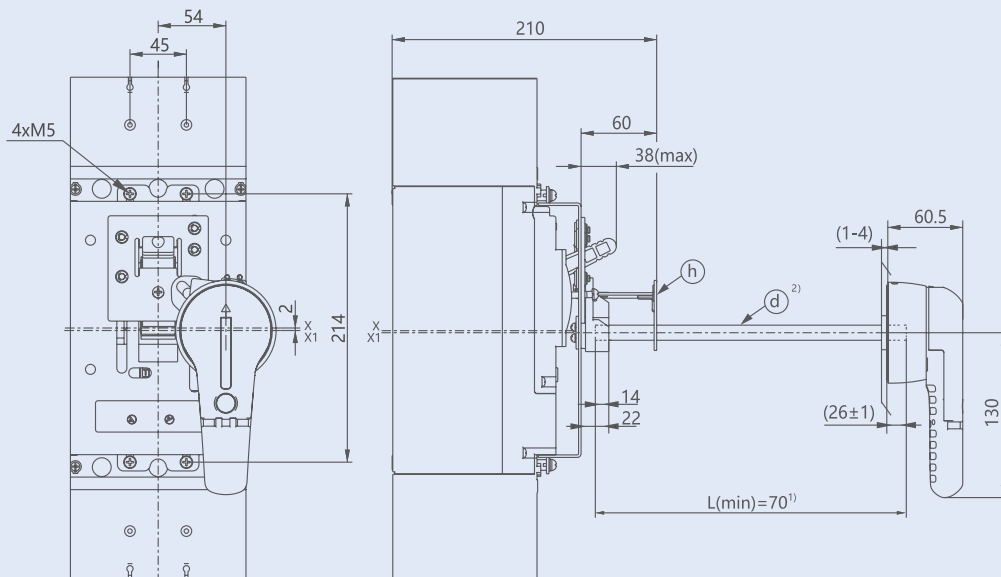
9.6.3 Handle size drawing

NM8N-250HV



Note: 1) When $L \geq 150$, in order to avoid the shaft sagging, h support plate need to be installed; When $50 \leq L \leq 90$, support plate is not needed;
2) Standard length of rotating shaft $L=320$.

NM8N-400/630HV



Note: 1) When $L \geq 150$, in order to avoid the shaft sagging, h support plate need to be installed; When $70 \leq L \leq 90$, support plate is not needed;
2) Standard length of rotating shaft $L=260$.