



USW-Flex-Mini Quick Start Guide

Package Contents



UniFi Switch Flex Mini



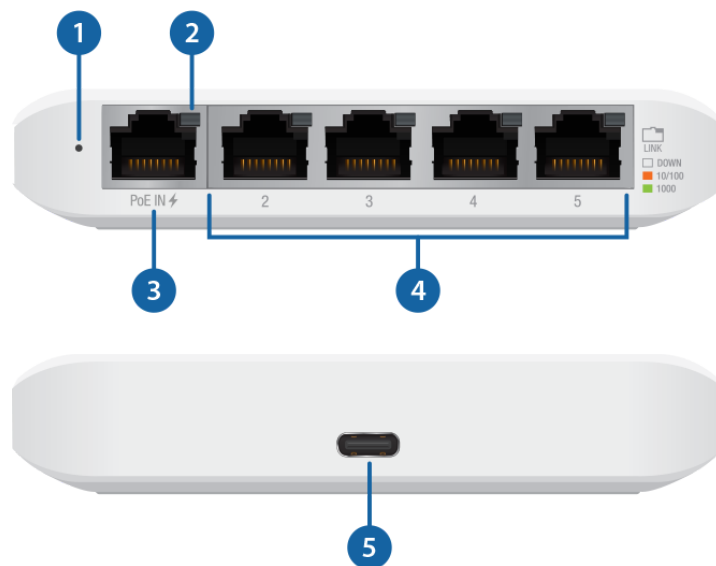
Power Adapter (5V, 1A)*

* Included only in the single-pack of the USW-Flex-Mini.

System Requirements

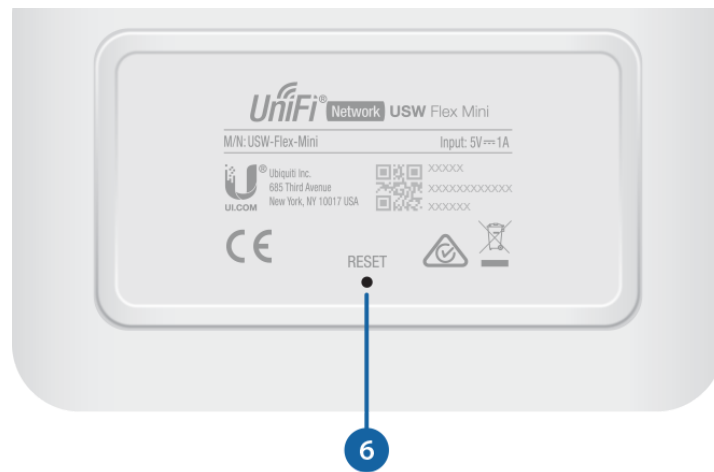
- Linux, Mac OS X, or Microsoft Windows 7/8/10
- Java Runtime Environment 1.8 or above recommended
- Web Browser: Google Chrome (Other browsers may have limited functionality)
- UniFi Controller software v5.12.5 (or newer), available at: ui.com/download/unifi

Hardware Overview





USW-Flex-Mini Quick Start Guide



1 System LED	
Flashing White	Initializing.
Steady White	Factory defaults, waiting for adoption.
Alternating White/Blue	Device is busy; do not touch or unplug it. This usually indicates that a process such as a firmware upgrade is taking place.
Steady Blue	Successfully adopted by a network and working properly.
Flashing Blue	This is used to locate a device. When you click Locate in the UniFi Controller software, the System LED will flash blue. The software will also display the location of the UniFi Switch on the map.
2 RJ45 Link/Speed/Activity LED (Ports 1- 5)	
Off	No Link
Amber	Link established at 10/100 Mbps Flashing indicates activity
Green	Link established at 1000 Mbps (1 Gbps) Flashing indicates activity
3 PoE In Port	
This RJ45 port supports a 10/100/1000 Mbps Ethernet connection and 802.3af/at PoE input.	



USW-Flex-Mini Quick Start Guide

RJ45 ports support 10/100/1000 Mbps Ethernet connections.

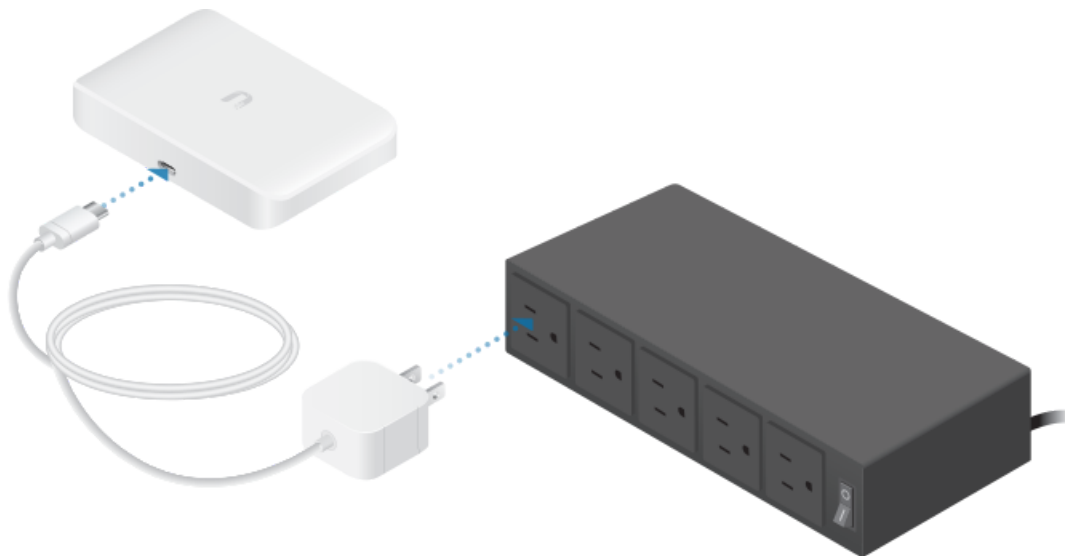
5 Power Port

Connect the included Power Adapter to the Power port.

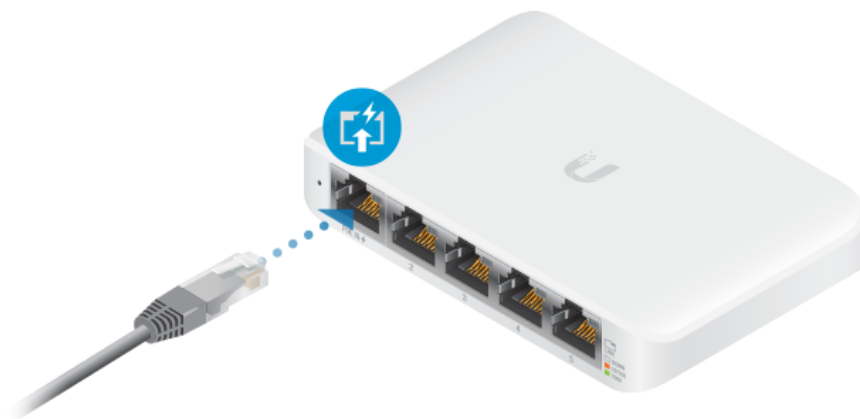
6 Reset Button

Resets to factory defaults. The device should be running after bootup is complete. Press and hold the Reset button for about 10 seconds until the LED starts flashing and then becomes solidly lit. After a few seconds, the LED will turn off, and the device will automatically reboot.

Connecting Power



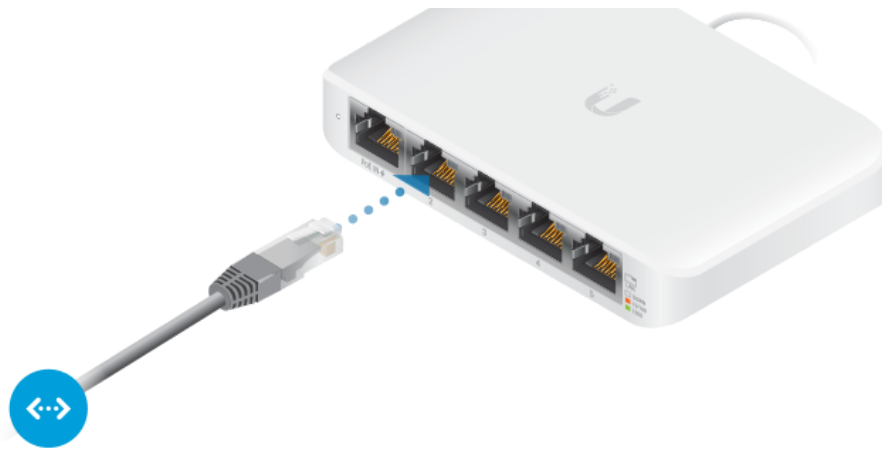
OR



Connecting Ethernet



USW-Flex-Mini Quick Start Guide



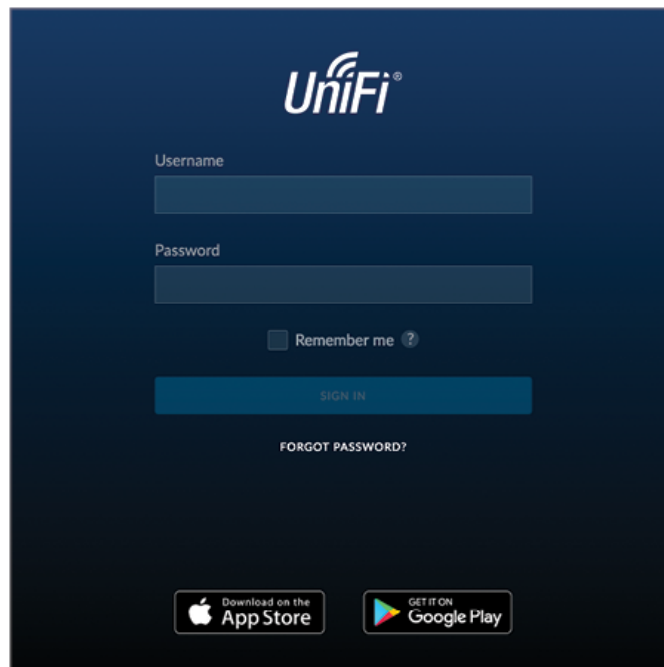
Software Installation

Download and install the latest version of the UniFi Controller software at ui.com/download/unifi and follow the on-screen instructions.



Note: If you already have UniFi Controller v5.12.5 or newer installed, skip to [“Adopting the UniFi Switch”](#).

After you have installed the software and run the UniFi Installation Wizard, a login screen will appear for the UniFi Controller management interface. Enter the admin name and password that you created and click Sign In.

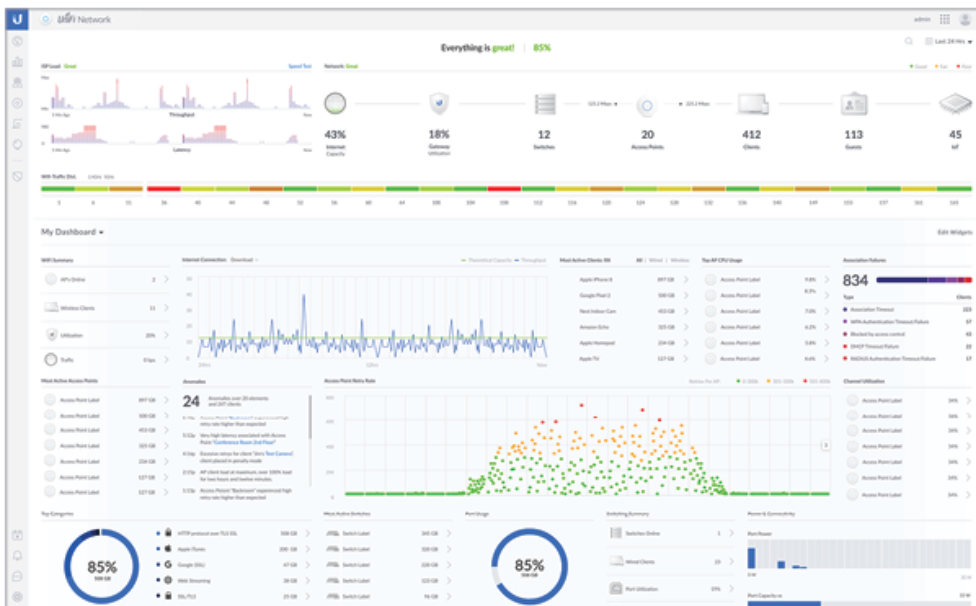


To adopt the UniFi Switch, proceed to [“Adopting the UniFi Switch”](#).

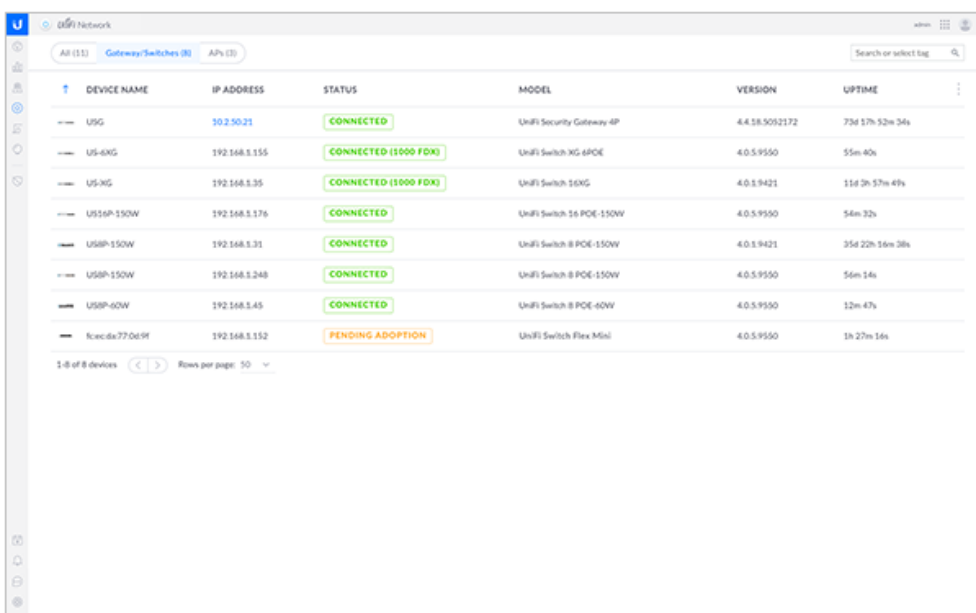
You can manage your network and view network statistics using the UniFi Network Controller management interface. For information on using the UniFi Network Controller software, refer to the User Guide located on our website at: ui.com/download/unifi

USW-Flex-Mini Quick Start Guide

1. From the UniFi Controller dashboard, click Devices in the left menu bar.



2. On the Devices screen, locate the UniFi Switch in the list of devices under the Model column. To adopt the UniFi Switch, click Adopt.



3. The System LED on the UniFi Switch will turn blue to confirm that it has been successfully adopted.

Specifications

USW-Flex-Mini	
Dimensions	107.16 x 70.15 x 21.17 mm (4.22 x 2.76 x 0.83")
Weight	150 g (5.29 oz)
Networking Interfaces	(5) 10/100/1000 Mbps RJ45 Ports



USW-Flex-Mini Quick Start Guide

PoE III Interface	802.3af/at PoE (PINS 1, 2+, 3, 6-)
Max. Power Consumption	2.5W
Power Method	USB Type C, 5V 802.3af/at PoE (44 - 57VDC, 0.05 - 0.04A)
Power Supply	5V, 1A Power Adapter*
Voltage Range	
USB Type C	4.7 - 5.2VDC
802.3af/at PoE	44 - 57VDC
LEDs	
System	Status
RJ45 Data Ports	Link/Speed/Activity
ESD/EMP Protection	± 16kV Air, ± 12kV Contact
Operating Temperature	-5 to 45° C (23 to 113° F)
Operating Humidity	10 to 90% Noncondensing
Certifications	CE, FCC, IC

* Included only in the single-pack of the USW-Flex-Mini.

Safety Notices

1. Read, follow, and keep these instructions.
2. Heed all warnings.
3. Only use attachments/accessories specified by the manufacturer.



WARNING: Failure to provide proper ventilation may cause fire hazard. Keep at least 20 mm of clearance next to the ventilation holes for adequate airflow.



WARNING: To reduce the risk of fire or electric shock, do not expose this product to rain or moisture.



WARNING: Do not use this product in location that can be submerged by water.



WARNING: Avoid using this product during an electrical storm. There may be a remote risk of electric shock from lightning.

Electrical Safety Information

1. Compliance is required with respect to voltage, frequency, and current requirements indicated on the manufacturer's label. Connection to a different power source than those specified may result in improper operation, damage to the equipment or pose a fire hazard if the limitations are not followed.
2. There are no operator serviceable parts inside this equipment. Service should be provided only by a qualified service technician.



USW-Flex-Mini Quick Start Guide

ui.com/support/warranty

The limited warranty requires the use of arbitration to resolve disputes on an individual basis, and, where applicable, specify arbitration instead of jury trials or class actions.

Compliance

FCC

Changes or modifications not expressly approved by the party responsible for compliance could void the user's authority to operate the equipment.

This device complies with Part 15 of the FCC Rules. Operation is subject to the following two conditions.

1. This device may not cause harmful interference, and
2. This device must accept any interference received, including interference that may cause undesired operation.

This equipment has been tested and found to comply with the limits for a Class B digital device, pursuant to Part 15 of the FCC Rules. These limits are designed to provide reasonable protection against harmful interference in a residential installation. This equipment generates, uses, and can radiate radio frequency energy and, if not installed and used in accordance with the instructions, may cause harmful interference to radio communications. However, there is no guarantee that interference will not occur in a particular installation. If this equipment does cause harmful interference to radio or television reception, which can be determined by turning the equipment off and on, the user is encouraged to try to correct the interference by one or more of the following measures:

- Reorient or relocate the receiving antenna.
- Increase the separation between the equipment and receiver.
- Connect the equipment into an outlet on a circuit different from that to which the receiver is connected.
- Consult the dealer or an experienced radio/TV technician for help.

ISED Canada

CAN ICES-3(B)/NMB-3(B)

Australia and New Zealand



CE Marking

CE marking on this product represents the product is in compliance with all directives that are applicable to it.





USW-Flex-Mini Quick Start Guide

Online Resources



© 2021 Ubiquiti Inc. All rights reserved.